

# XCU C 2SM

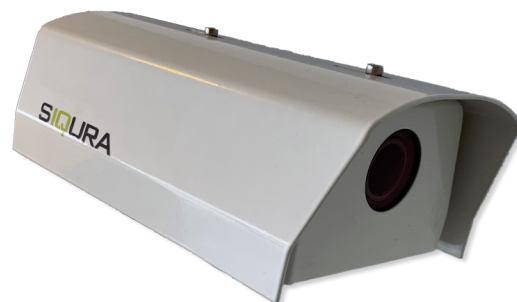
XCU Compact 316L rugged 2MP HD camera motorized zoom

## DESCRIPTION

Rugged stainless-steel camera for demanding environments. The XCU Compact is available with a 4x or 10x motorized lens and autofocus for rapid deployment and remote installation. The XCU and its accessories are double protected against corrosion; they are entirely made of powder-coated stainless-steel (316L). The housing is hermetically sealed against water and dust, which makes it ideal for harsh environments like traffic, tunnels, marine, offshore, heavy industry, waste management, etc. The direct-to-fiber connection makes it suitable to cover long distances and less susceptible for interference

## FEATURES

- Motorized zoom and Full-HD
- 100Mb/s duplex single mode fiber
- Compact, robust, and corrosion free
- powder-coated 316L stainless steel housing
- Plug & Play
- Nano glass optical window
- Water and dust tight: IP66 & IP67
- ONVIF Profile S



## Description

The XCU Compact Camera is designed to operate under the tough environmental conditions in traffic (tunnels) and marine (offshore) applications. The housing and brackets are made from high grade 316L stainless steel, powder-coated (RAL9016) for the best protection against corrosive substances and environments.

### Plug & Play

Installing and commissioning IP cameras is made easy with the XCU Compact. It slides into place on the XCU's versatile mounting accessories and is operational by connecting powered Ethernet . No need to open the unit; all connections can be prepared in advance.

### Integrated 4x or 10x zoom Full-HD lens

The XCU Compact is available with different motorized zoom lenses. The short range 2.8 mm to 12 mm (4x) or mid-range 5 mm to 50 mm (10x) optical zoom offers an ideal coverage of the scene for almost any camera position. Remote zoom and focus allows you to define and configure the field-of-view afterwards, without opening the camera. The ultra-low light performance makes this a versatile camera for a wide range of applications.

### Open standards

Out of the box, the XCU Compact integrates with the common VMS systems. Being ONVIF Profile S compliant, the camera is supported by most video management systems. When needed, the camera can be controlled through a comprehensive HTTP API (Siqua Programming Interface). This specifically enables deployment in projects with custom requirements.

### Multi-streaming and multicasting

The XCU Compact has multi-streaming capabilities for simultaneous transmission of one or more H.264 streams combined with MJPEG. This guarantees interoperability with existing VMS systems. Multiple combinations of resolution and frame rate can be configured to satisfy different live-viewing and recording scenarios. In addition, multicasting is supported for complex, multi-user video networks.

### Image enhancements

The XCU Compact has a full set of image enhancement tools on-board to improve the image for the actual application. The adjustable white balance and hue can compensate

for varying lighting conditions. Back-light compensation and wide dynamic range functions enhance image quality in difficult lighting situations, ensuring quality pictures even in case of challenging scenes.

#### Direct to fiber connection

The XCU Compact 2SM is fitted with an Ethernet over fiber connection. With it it can span distances up to 30 km over duplex single mode fiber (OS1) without the problems of radio interference or power surges. On top of that fiber connections are hard to hack and therefor much more secure that CAT5 or CAT6 connections.

Camera housing	
Body material	316L stainless steel
Finishing	Powder coated (RAL9016)
Sunshield	316L powder coated (RAL9016)
Heater/Demister	Standard
Ingress protection	IP66, IP67
Impact rating casing	IK10
Solar radiation test	MIL-STD-810, method 505.4 (p.4)
Shock test (transportation)	MIL-STD-810, method 516.5
Vibration (IEC 50068-2-6)	10 Hz to 150 Hz, 0.5g, all 3 axes, 1 oct/min, 1 sweep
Operating temperature	-30 °C to +75 °C (-22 °F to 167 °F) - Nema TS-2
Relative Humidity	5% to 100%
Dry heat test	+75 °C, 24 hours
Weight	2.5 kg

Imager and lens		
Motorized zoom	10x zoom	4x zoom
Image sensor	1/3" Progressive scan CMOS	1/2.8" progressive scan CMOS
Effective pixels	1920(H) x 1080(V), 2.1Mp	1920(H) x 1080(V), 2.1Mp
Minimum scene illumination	0.02 lux color, 0.005 lux B/W f/1.8	0.02 lux color; 0.005 lux B/W f/1.4
Lens	4.9 to 49 mm	2.8 to 12 mm
Horizontal field of view	49.4° (W) to 5.3°(T)	105° (W) to 33° (T)
Lens type	motorized varifocal	motorized varifocal
Dynamic WDR	120dB	
Shutter speed	1/25 - 1/30,000 s	
Features	BLC, HLC, auto/manual white balance, (3D/2D) noise reduction, defog	
Exposure	Auto/Manual	
Day/Night (IR-cut filter)	Auto/Manual	
Focus	Auto, manual push-to-focus	

Video stream	
Number of streams	2x
Aspect ratio	16:9, 16:10, 5:4, 4:3 (cropped, no scaling)
Compression algorithm(s)	H.264 BP/MP/HP (H.264/MPEG-4 AVC), MJPEG
Supported output resolutions	1920x1080; 1280x1024; 1280x720; 720x576; 704x576; 640x480; 480x576, 352x576; 704x288; 352x288; 320x240, 176x144
Compression bit rate control	Variable bit rate (VBR)
Output bit rate (per H.264 stream)	Up to 6Mb/s
Max latency	125 ms
Number of video output streams	Up to 20 (RTSP) per input
Total output data rate (max)	50Mb/s
Video overlay	3x Text, 1x bitmap (BMP, GIF) in both optical and thermal image

## Electrical

# Specs



Electrical		
Supply voltage	24 Vac 50/60 Hz or 24 Vdc (Galvanic isolated)	
Max. power consumption	10x zoom	4x zoom
	9 W heater off; 13 W heater on	12 W heater off; 16 W heater on
Power connector	3-pin 7/8" Conec	
Network connector	IP67 dual LC (Conec)	

Network	
Interface(s)	100 Mb duplex singlemode Ethernet, Dual LC, 30 km
Protocols	IPv4, TCP/IP, UDP, RTP, RTSP, HTTP, HTTPS, ICMP, FTP, SMTP, DHCP, UPnP, IGMP, SNMP, QoS, ONVIF, TLS1.2, NTCIP-1205
Password levels	User and Administrator
Supported browsers	Internet Explorer (9.0+), Chrome, Firefox, Safari
User accounts	20

Ordering information	
XCU-C M04-2SM	XCU Compact rugged low-light HD camera 4x motorized 4-12,2SM
XCU-C M10-2SM	XCU Compact low-light HD camera 10x, 5-50, 2SM

Mounting accessories	
XCUWM01	XCU 316L Wall/Pole mount with swivel, RAL9016
XCUCM01	XCU 316L Rugged ceiling mount, RAL9016
XCUSW01	XCU 316L Swivel mount (swivel only), RAL9016

Cable connectors	
XCUCNC-PWR01	XCU IP67 power connector straight, cable part (included)
XCUCNC-2SM	XCU IP67 SM fiber connector straight, cable part (included)

DIMENSIONS IN [MM]

